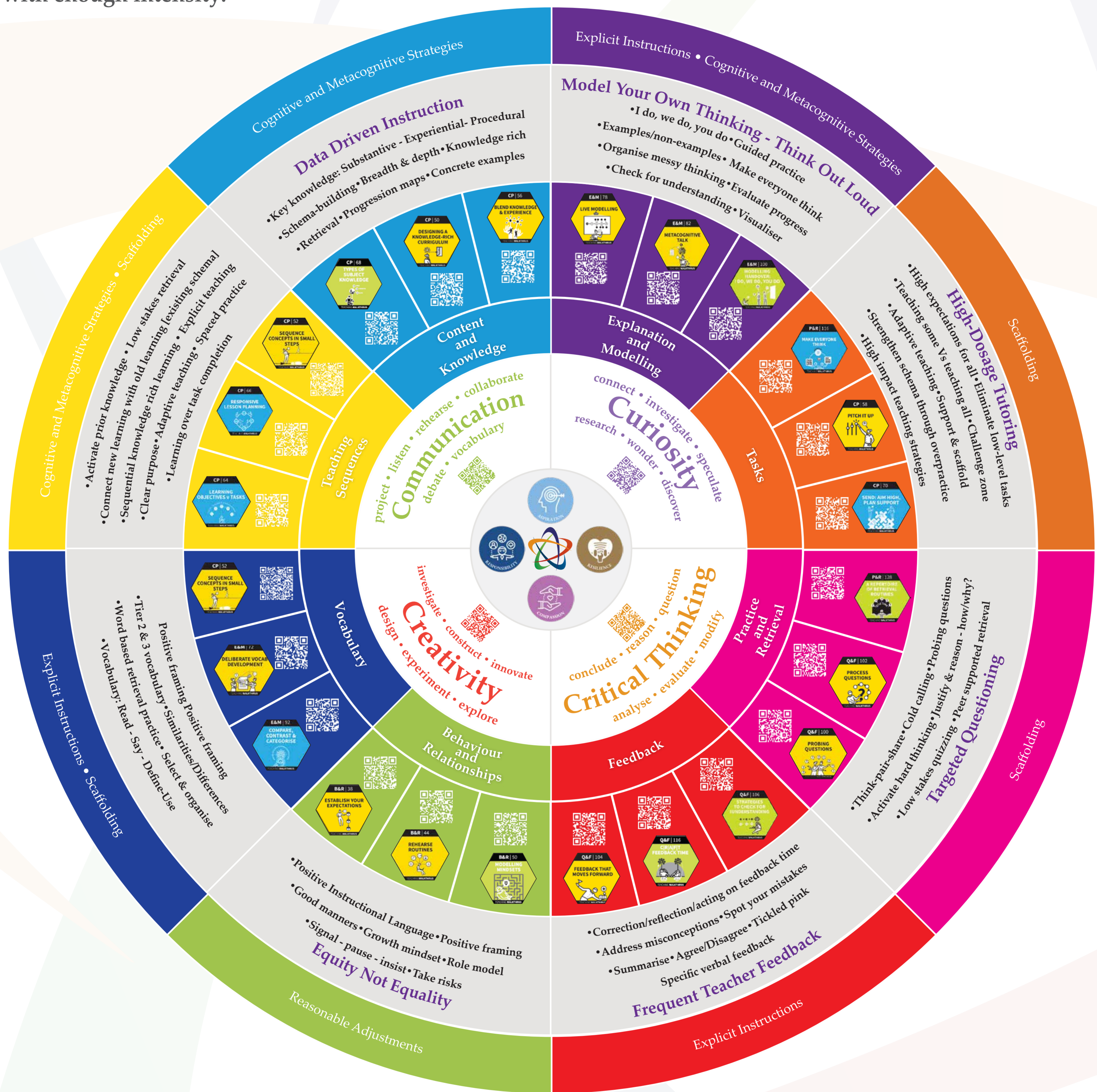


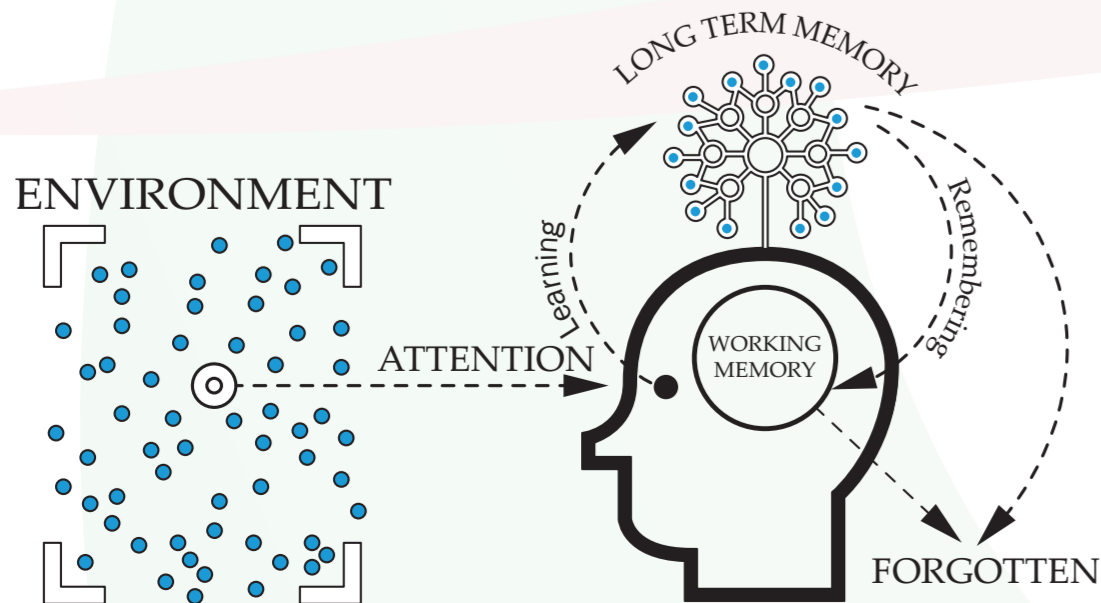
# The GLC Pedagogy Wheel

At The Gateway Learning Community, we define teaching as the process of guiding and facilitating learning. We teach for understanding, retention and the application of knowledge and the development of transferable learning competencies: communication, curiosity, critical thinking and creativity. We believe that in order for pupils to make good progress, lessons should be planned from the perspective of 'thinking' and the extent to which pupils are challenged to think deeply and pushed forward with enough intensity.



## A Relentless Focus on Academic Achievement

### The Learning Model



### Inclusive Teaching & Learning Strategies



### The Most Effective Strategies to Raise Attainment for Under-resourced Pupils.

Dobbie and Fryer [2012] / EEF Research